

DURA[®] UB650 UNIVERSAL BEAM

Description

DURA[®] UB650 Universal Beam is a newly innovated product suitable for the concept of Industrialized Building System (IBS) such as buildings or warehouses construction which required light-weight, long span and durable system. **DURA[®] UB650** made from the revolutionary composite material of ultra-high performance concrete and high-carbon-high-tensile steel fibres. It is an excellent solution for buildings with long span requirements of up to 22 m without intermediate support.

Features

- **Dura[®] UB650** consists of P.C. strands in longitudinal direction and typically prestress to 70~80% of the 'guaranteed' tensile strength of the strands. Strands used are 15.2 mm diameter 7-wire super strands (low relaxation) complying with AS 1311; with a guaranteed tensile load of 250 kN and ultimate breaking load of 270 kN.
- The UHPdC used for the **DURA[®] UB650** has a characteristic compressive strength range between 120 to 140 MPa, and characteristic flexural strength of 20 MPa.
- **DURA[®] UB650** eliminates the use of conventional steel reinforcing bars and stirrups (except starter-bars are provided at the end regions for connection purpose). All steel fibres used are made from high carbon steel wires with tensile strength over 2300 MPa.



Figure 1 – Dura[®] UB650 used in portal frame.

Advantages of DURA[®] UB650

- **DURA[®] UB650** is highly durable and impermeable. It is therefore suitable for use even in harsh environments.
- **DURA[®] UB650** used “un-cracked section” design approach at SLS. Thus it further assures its serviceability and durability.
- **DURA[®] UB650** is at least 2 times lighter than conventional precast RC beam (see Figure 2). Thus lead to ease of handling/transportation and installation.
- Scaffolding, props or formwork may or may not required over the supports (depends of design).
- Reducing construction site activities, improving safety margins and eliminating in-situ casting work (except sealing of the construction joints and some minor details).
- **DURA[®] UB650** is guaranteed to be volumetrically stable as they are steam-cured to minimized creep. This process also accelerates all long term shrinkage of the UHPdC.
- **DURA[®] UB650** frames can be produced to desired length as specified by the designers.
- Due to its high durability, high ductility and high fatigue strength, it provides excellent resistance against impact and abrasion loads.
- **Dura[®] UB650** supports the 'Green' vision as it is a more environmentally friendly material compared to conventional beam such as RC beam and structural steel beam (see Figure 2).
- **Dura[®] UB650** used special fiber to provide sufficient resistance in the event of fire.

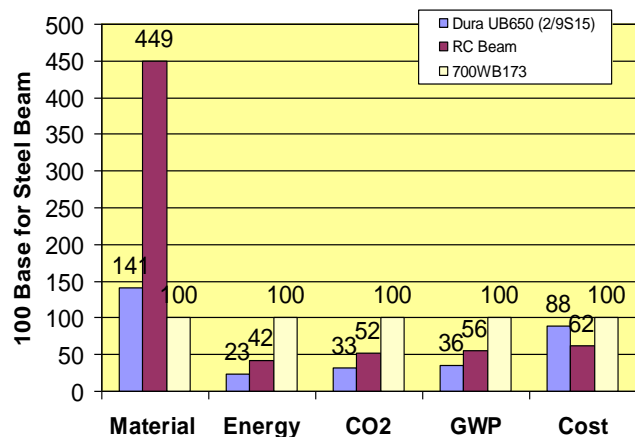


Figure 2 – Cost and environmental impact comparisons.

DURA[®] UB650

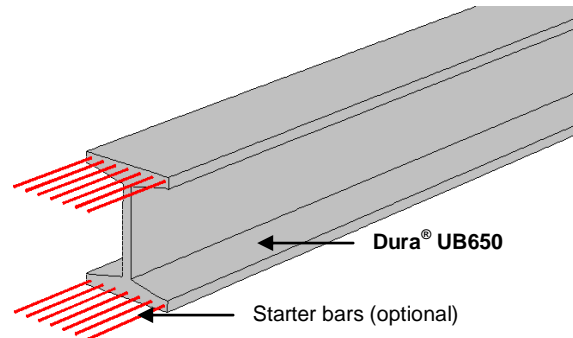
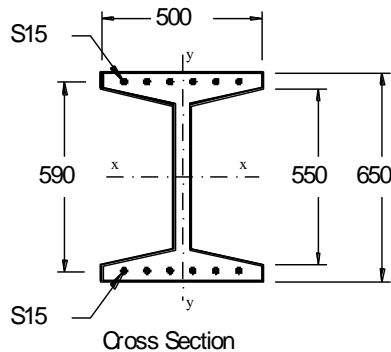


Table 1: Technical Data for DURA[®] UB650.

		Unit	UB650
Self-Weight	G	kg/m	240
Length	L	m	8 ~ 22 [↓]
Sectional Area	A _g	x 10 ³ mm ²	100
Neutral Axis	y _{top}	mm	325
	y _{bot}	mm	325
2 nd Moment of Inertia	I _{xx}	x 10 ⁹ mm ⁴	6.708
	I _{yy}	x 10 ⁹ mm ⁴	1.336
Elastic Section Modulus X-X	Z _{top,xx}	x 10 ⁶ mm ³	20.64
	Z _{bot,xx}	x 10 ⁶ mm ³	20.64
Torsion Constant	J	x 10 ⁶ mm ³	193.83
Warping Constant	I _w	x 10 ¹² mm ³	110.4

[↓] Can be customized

Table 2: Design Capacity of DURA[®] UB650.

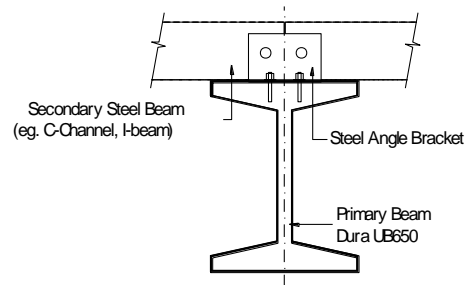
		Unit	UB650					
			2/6S15	2/7S15	2/8S15	2/9S15	2/10S15	2/11S15
Top Strands		Nos.	2	2	2	2	2	2
Bottom Strands		Nos.	6	7	8	9	10	11
Cracking Moment	M _{cr}	kNm	593	673	743	824	902	970
Ultimate Moment	M _u	kNm	933	1085	1238	1386	1515	1657
Recommended Design Bending Moment (φ = 0.8) [↑]	M [*]	kNm	746	868	990	1109	1212	1326
Cracking Shear Strength	V _{cr}	kN	225	225	225	225	225	225
Ultimate Shear Strength	V _u	kN	350	350	350	350	350	350
Recommended Design Shear Strength (φ = 0.7) [↑]	V [*]	kN	245	245	245	245	245	245

[↑] φ = strength reduction factor as per AS3600-2001

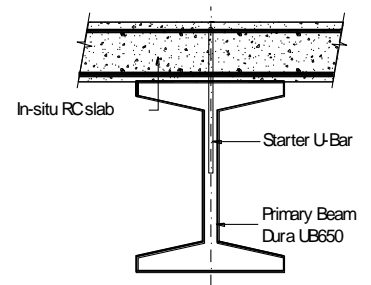
Applications

Dura[®] UB650 can be used in a number of ways such as:

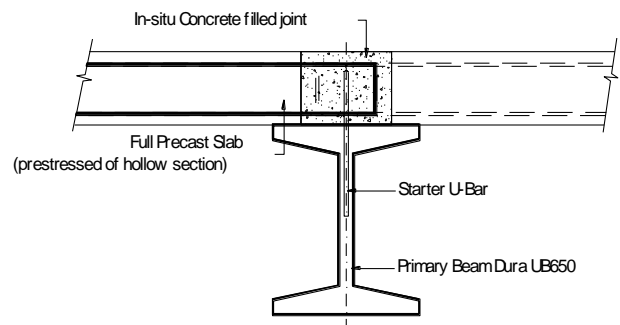
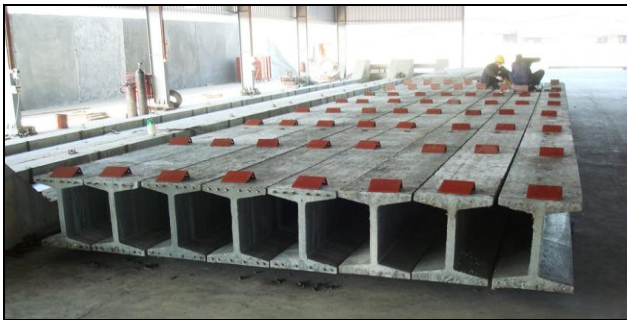
1. composite with steel beams / purlins;
2. composite with in-situ cast RC slab ;
3. composite with full precast RC slab; and
4. composite with half precast slab.



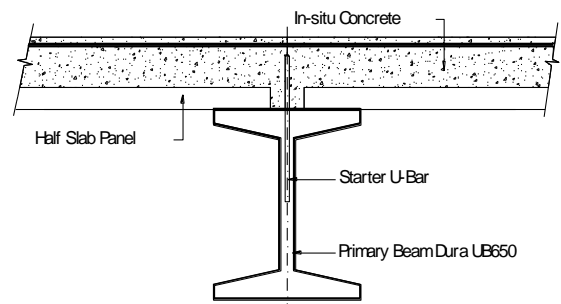
With Steel Beam



Composite With In-situ Cast RC Slab

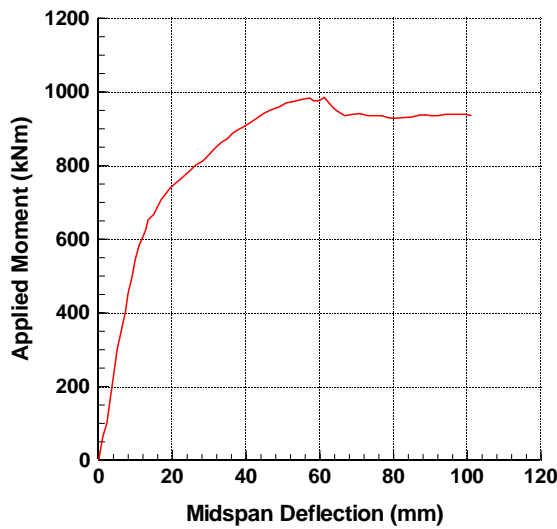


Composite With Full Precast Slab

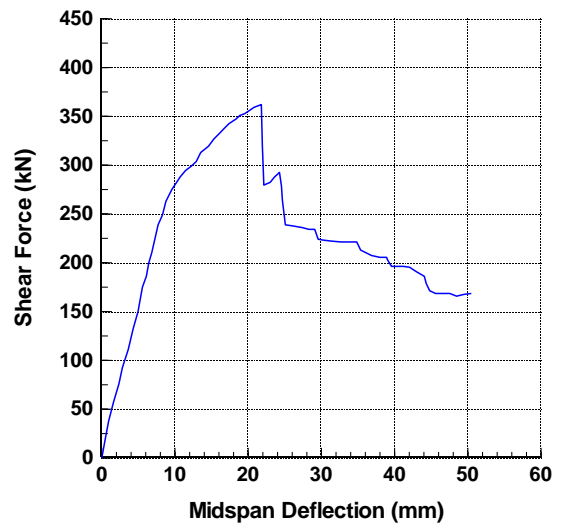


Composite With Half Precast Slab



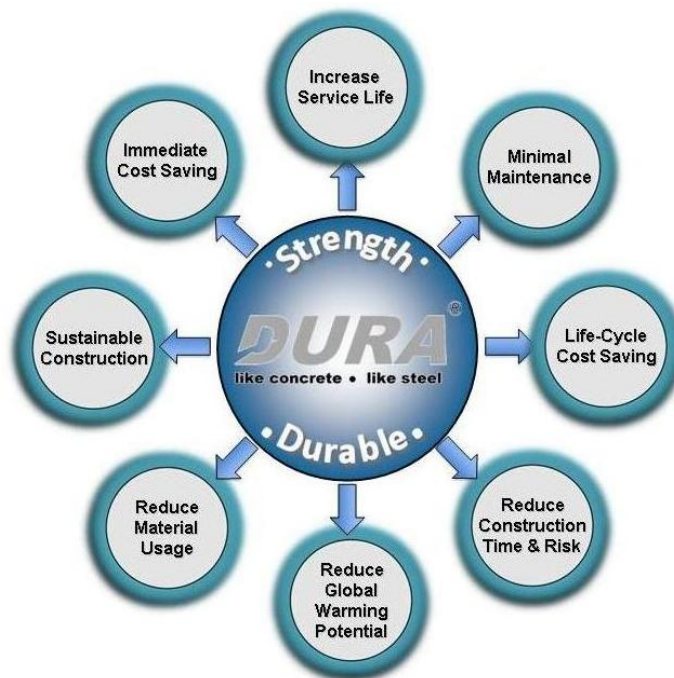


Experimental Flexure Strength Result of Dura[®] UB650 (6/6S15)



Experimental Shear Strength Result of Dura[®] UB650 (6/6S15)

Result certified by SIRIM QAS: J20085040550/(SQAS/CBMT/T.REC/CSL/15)



Copyrights : Under copyright law, this document may not be copied, reproduced, translated or reduced to any electronic medium or machine readable form, in whole or in part, without prior written consent of Dura Technology Sdn Bhd.

Disclaimer : Dura Technology Sdn Bhd may make improvements and/ or changes to the product described in this data sheet at any time. The data sheet is not part of the documentation for a specific version or release of the product, but will be updated periodically.